



KUHN

Issue 46/2024

Aktuell

Our performance – your success



Discover the mighty Komatsu PC8000 in the Heavy Metal Garden (Switzerland)

In the photo: our employees at the handover



KOMATSU



KUHN - Baumaschinen

www.kuhn.at

Germany, Austria, Czech Republic, Slovakia, Croatia, Hungary, Switzerland, Slovenia, Romania, Moldova

PRECISION XL-MOULDS WITHOUT REWORK



When it comes to producing high-precision XL-sized moulds, there are not many companies that can accomplish this to the satisfaction of demanding sectors such as the aviation and automotive industries. Grunewald GmbH&Co.KG in Bocholt can and accepts no compromises when it comes to the technology used. The latest proof: Its investment in a Mecmill travelling column milling machine from Emco Mecof.

Mecmill brings maximum precision and productivity

Founded in 1963, Grunewald has developed into a successful medium-sized company with around 200 employees, which is now in its third generation of family management



Short description

/Requirement: Unmanned shifts for the production of high-precision moulds in XL dimensions

/Solution: High flexibility of the EMCO Mecof Mecmill travelling column machine due to its large working area.

/Advantages: Easily achievable surface quality and precision, two- or three-shift operation and a high degree of automation enable, among other things, a reduction in energy consumption by 30%.

under the brothers Ulrich and Philipp Grunewald.

The company's core competencies include the development, design and manufacture of lightweight metal parts and plastic components – from prototype construction to pre-series and series production. At the same time, the company also provides innovative tool and mould construction, which supplies, among others, highly demanding sectors such as the automotive and aviation industries.

Grunewald GmbH & Co. KG
 Biemenhorster Weg 19, D-46395 Bocholt
 Tel.: +49 2871 25070
 www.grunewald.de

Since 2022, Grunewald GmbH has been producing, among other things, complex XL-sized moulds for the aviation and automotive industries on a Mecmill travelling column milling machine from Emco Mecof.



Komatsu HB365LC/NLC-3: Innovative hybrid technology



Welcome to
bauma
7-13 APRIL 2025, MUNICH
Komatsu Hall C6 and demo area

KOMATSU
Creating value together

**Up to 20%
fuel savings**
compared to conventional
excavators



Komatsu HB365LC/NLC-3

Reduce CO2 emissions and fuel consumption by up to 20% compared to a conventional excavator, with a total hybrid power of 235 kW / 320 hp. This third generation of Komatsu hybrid excavators offers the most reliable and advanced technology currently available in the industry.



Foreword

Dear business partners!

The current geopolitical crises have unfortunately been with us for far too long.

The war between Russia and Ukraine continues and is taking a massive toll on our economy.

The resulting inflation and increased costs are putting a strain on companies and inhibiting the willingness to invest.

A certain degree of uncertainty accompanies all of us. Politicians have to chart the right course for economic security and to ensure a positive development of the economy. Increasing the willingness to work more by creating attractive framework conditions plays a crucial role in this.

Working more must again be made financially worthwhile for the individual.

A performance-oriented society promotes value creation, innovation, economic growth and ultimately ensures the prosperity of our society.

We wish you an interesting read of our Kuhn Aktuell.

Your Kuhn family

Eugendorf, October 2024

Europe's largest sawn timber manufacturer opts for the Komatsu WA475-10KTL industrial wheel loader with a 14 m³ high-tipping bucket

The internationally active and well-known Stora Enso Group – one of the leading providers of sustainable wood-based solutions for the construction industry and one of the largest private forest owners in the world – purchased the WA475-10KTL from Komatsu, a wheel loader that is ideally suited to the requirements of its Czech branch at Plana.

The figures of the Finnish-Swedish Stora Enso Group are certainly impressive: In 2022, the company generated sales of 11.7 billion euros with around 21,000 employees. The Wood Products division is Europe's largest sawn timber manufacturer and, with its growing Building Solutions division, ensures low-carbon construction worldwide. In addition to solutions for packaging and biomaterials, the company is known as a supplier for timber construction across continents and industries. The company has numerous locations in Europe and its projects extend around the entire globe. The international group operates three sawmills in Austria: in Brand (Lower Austria), Ybbs (Lower Austria) and Bad St. Leonhard (Carinthia). In the Czech Republic, it operates production sites at Plana and Zdirec, with



a brand new industrial wheel loader from Komatsu recently being purchased for the former site.

Stora Enso purchased the WA475-10KTL – a modern and powerful work tool – from Kuhn Bohemia a.s. – a subsidiary of Kuhn Holding GmbH, Eugendorf near Salzburg.

The newly developed industrial lifting frame KTL (Komatsu Tool Linkage) is particularly suitable for the use of large-volume shovels and wood grapples

THE ESSENTIALS

NOTHING MORE AND NOTHING LESS

- Achieve the desired height quickly and precisely – first time round
- At least 30% increase in productivity
- Easy processing of flat and inclined surfaces
- Compass operation with rotated upper carriage also for slopes
- Improved work safety – no personnel on the machine
- Especially user-friendly and quick to learn

AUTHORISED DEALER

Five new Komatsu construction machines further enhance the fleet of Salzburg Sand- und Kieswerke (3x WA475-10; 1x WA500-8; 1x HM400-5)

Salzburg Sand- und Kieswerke (SSK) recently purchased four Komatsu wheel loaders and an articulated dump truck (for the subsidiary Moldan Baustoffe) from Kuhn. The two companies have a very long and reliable partnership.

SSK supplies concrete, sand, stone and chippings for house building, road construction, agriculture, commercial buildings, as well as power plant and tunnel construction. The family business employs 200 people throughout Salzburg and has been in existence since 1971. For SSK, sustainable and careful interaction with the environment is a top priority, which is why they rely on a modern fleet. They recently acquired a whole range of construction machines from Kuhn. Four Komatsu wheel loaders and an articulated dump truck were purchased.

KOMATSU MEANS PERFORMANCE

“I have been working for SSK for over 20 years and have known Kuhn since I was a child. We have had a very good partnership for several decades, we can rely on each other and we also appreciate the performance of all the Komatsu machines that we have purchased so far,” explains Stefan Hofer, who is a member of the SSK management team.

Many companies pay attention to low fuel consumption in their new construction



machines. Most of them look at how high consumption is in litres per hour. “We add another key figure and also take into account how many litres a piece of equipment consumes per ton. We are very satisfied with the performance of the Komatsu machines here,” says Hofer.

At the key handover: Christian Moser (Kuhn Sales Manager, left), Stefan Hofer (member of SSK management, centre) and Bernhard Langegger (Kuhn Sales, right).



The articulated Komatsu dump truck HM400-5 with tailgate, its robust design and the latest axle suspension is in use at the Moldan company in Kuchl.

Gradbeni materiali d.o.o. opts once more for the Komatsu WA470-8

The WA470-8 from Komatsu is a powerful wheel loader used by Gradbeni materiali d.o.o. With a robust design and advanced technology, it ensures the efficient loading and transport of construction materials. Its economical fuel consumption and high reliability make it ideal for the daily challenges of the construction industry. The user-friendliness and safety of the WA470-8 increase productivity and employee satisfaction.



From left to right: Machine operator, Gradbeni; Jure Biskup-Sales Kuhn d.o.o.; Peter Irsic-Managing Director of Gradbeni materiali d.o.o.



The right tool for every job

INNOVATIVE
in product design

High performance with low weight

Extremely few moving parts

Adjustable control valves

Minimal maintenance requirements

Ultra-low operating costs



BECAUSE EXPERIENCE COUNTS

Kuhn Hrvatska continues its successful cooperation with VG Kalic

VG Kalic was founded 23 years ago, in 2001, and has now grown to 30 employees and a turnover of 4 million euros. By 2024, sales are expected to rise to 6 million euros.

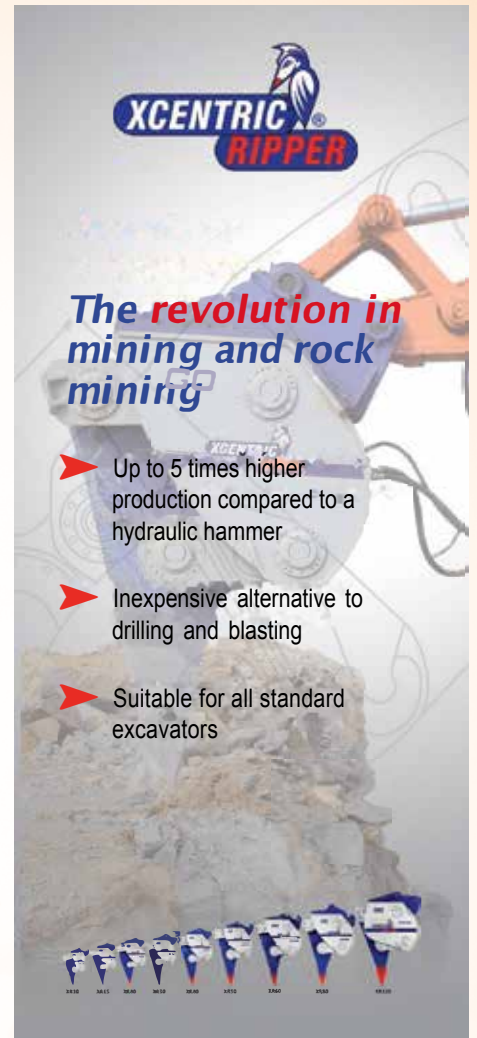
The company owes this growth to its excellent references in road construction and civil engineering, especially in the last three years. During this time, the number of employees has tripled from 10 to 30 and extensive investments have been made in the machine fleet.

Mr. Kalic has purchased the following machines from Kuhn Hrvatska in the last 15 months:

- SSL SK 820-8Eo
- BHL WB97S-8Eo
- PC 88MR-11Eo
- PC 210NLC-11Eo
- Ammann roller ARX 23
- Ammann roller ARX 26
- PC 80MR-5Eo
- Furukawa hammer FXJ275
- Furukawa hammer F6LN
- Ammann vibrating plate 40/60

In July 2024, a contract was signed for a new grader, the HBM Nobas BG 120 TA-7 (6x6).

Mr. Kalic's business philosophy is: "Customer satisfaction is one of the most important priorities in our business." He is convinced of VG Kalic's and Kuhn Hrvatska's potential for a successful and long-lasting partnership.



XCENTRIC RIPPER

The revolution in mining and rock mining

- ▶ Up to 5 times higher production compared to a hydraulic hammer
- ▶ Inexpensive alternative to drilling and blasting
- ▶ Suitable for all standard excavators



Our sales representative Marijan Sruc (left in the picture) with Mr. Kalic, the owner of VG Kalic

Cooperation with Aforte, digitalisation in focus

Our long-term cooperation has shown impressively that both the continuous use of our machines and the pursuit of digitalisation have become increasingly important. Aforte Kft. specialises in earthworks and area development. We have been in contact with Aforte since 2020 and support the company in the implementation of its projects. For this work, the customer uses bulldozers, excavators, rollers and trucks, among others. Since the start of the cooperation, KUHN Hungary has supplied all the machines needed, including three Ammann rollers with ACE Force Smart Compaction in the 15-ton range, three bulldozers in sizes D51, D61 and

D65, and a D71PXi, which will be delivered in the coming months. The smallest crawler was upgraded with a TOPCON 3D control system.

The 3D control brought so many benefits to the customer that they also made further purchases in the 3D area. In 2023, for example, we delivered both an intelligent Komatsu D61PXi bulldozer and a Komatsu PC290NLCi excavator. The D65EXi bulldozer followed in summer 2024. The cooperation is fully focused on the digitalisation of

construction sites. Komatsu machines provide valuable data through the Komtrax system and the “i” machines with 3D control. The ACE Force system ensures comprehensive data collection for Ammann systems. This data enables the customer to significantly increase the profitability, planning and ultimately the competitiveness of their company.

We wish the Ács family continued enjoyment in working with our Komatsu and Ammann machines.



Ammann roller ARS150 upgraded with ACE Force Compaction Measuring (digitised sealing reports for the construction sites)



Managing Director of Fa Aforte Kft, junior Gábor Ács

E-Parts Store

Kuhn.Portal



If you want to save time and money, then the **E-Parts Store** is the right solution for you.

Here are just a few of the benefits you can expect:

- **Access to orders 24 hours a day, 365 days a year**
- **Procure original Komatsu spare parts quickly and inexpensively**
- **Instant information on price and delivery status**
- **Overview of your orders**

Simply register using the form on our homepage and we'll contact you immediately to activate your access.



Revolutionising port operations: Two Mantsinen 200ES material handling machines arrive in Constanta



The Port of Constanta is a key hub in the Romanian logistics and trade network. UMEX S.A. is a major player in the maritime and logistics sector, offering a full range of services including cargo handling, storage and transport. The company is able to manage various types of goods such as bulk, breakbulk and containerised cargo. With its modern infrastructure and strategic location on the Black Sea, UMEX plays a crucial

role in facilitating international trade and promoting economic growth in the region. These machines will revolutionise the loading and unloading of grain and fertilisers. With an impressive productivity of 600 tons per hour, they will drastically reduce turnaround times for vessels docking in Constanta. What is special about the Mantsinen 200 ES is its hybrid capability: It runs on both diesel and electric propulsion, which increases

efficiency and reduces environmental impact. By reducing diesel consumption and emissions, the hybrid operation perfectly matches the global trend towards more environmentally friendly and sustainable industrial practices. This dual operation not only reduces costs, but also minimises the carbon footprint of port activities, thus promoting a cleaner and more sustainable port environment.

emco

THE IDEAL LATHE FOR EVERY WORKSHOP



scan me



www.emco-world.com

Discover the mighty Komatsu Heavy Metal Garden (Her)



An absolute highlight for families, excavator fans and anyone who wants to experience engineering up close. A perfect experience for the young and old!

Kuhn Schweiz AG was able to develop and implement this unique project in cooperation with Komatsu Mining Germany and Appenzeller Park. For all the departments and people involved, this project surpasses everything that has come before in terms of large and heavy construction machines. Never before in this world, has it been possible to see or even touch an 800-ton excavator of this size. Appenzeller Park allows those interested to marvel at and get up close and personal with the PC8000, the world's largest hydraulic excavator, with a record-breaking 55 m³ excavator bucket.

Here are some key data that will make any engineer's heart beat faster:

| | |
|--|---------------|
| Operating weight | 800 t |
| Weight of the boom, stick and cylinder | 97,400 kg |
| Crawler plates 1,900 mm (2 x 49 pieces = 122,500 kg) | 1,250 kg/unit |
| Counterweight | 52,300 kg |
| Bucket 55 m ³ , width 6,500 mm | 55,000 kg |
| Width of stick eye at front | 1,550 mm |
| Chassis beam attachment (one-sided) | 244 x M48 |
| Largest screw (tightening torque 27,000 Nm) | M68x4_12.9 |
| Engine power 2 x V16 Komatsu engine | 2 x 2,010 hp |
| Hydraulic system flow rate | 8,280 l/min |
| Engine oil volume | 2 x 290 l |
| Installation time | 375 man-days |

Komatsu PC8000 in the Appenzeller Park – Switzerland)



Our Swiss colleagues have already taken a company outing to Appenzeller Park and were amazed by this impressive sight.

Our Swiss employees with the PC8000:



PC8000 (800 t operating weight)

SMART CONSTRUCTION

About Smart Construction

Smart Construction, a technology company of Komatsu, was first introduced in 2015 to increase efficiency and solve labour

shortages in the Japanese construction industry. Smart Construction is now active throughout Japan, Europe, North America and Australia.

Smart Construction offers a range of solutions that accompany earthmoving projects from tender preparation to reporting. From building a 3D world with drone survey data to determining the best transport route. With this data, Smart Construction helps to track and optimise the use of machines and the dismantling and movement of materials on construction sites.

We would be happy to provide you with information in a personal meeting. Please contact your regional sales representative.

For more information, please visit:



<https://www.kuhn.at/de/baumaschinen/smart-construction>



COMPARE AND PROFIT! WE OFFER:

- Easy transfer of design data from other systems such as Topcon or Trimble
- Online driver support
- Wireless connection to tablets
- Clear 3D display system
- Payload meter – payload scale for Komatsu devices



Crawler excavator – delivery to the customer České sterkopísky spol. s r.o

České sterkopísky spol. s r.o., a leading supplier of gravel and sand in the Czech Republic and Slovakia, operates 23 sand and gravel pits. The company renews its machine fleet annually, which includes more than 100 construction machines, including wheel loaders, articulated dumpers, crawler excavators and bulldozers.

Thanks to the positive experiences and high customer satisfaction with the Komatsu HB365LC-3 machines (6 units in 2020 and 2021) that have already been delivered and their economical operation, České sterkopísky has decided to further expand its cooperation with Komatsu. The delivery of six more Komatsu machines has been agreed for this year: two WA475-10 wheel loaders, two HM300-5 dumpers and two HB365LC-3Eo excavators.



The company has particularly high expectations for the new WA475-10 wheel loaders, as it purchases around eight loaders of this size every year. The expansion of the

machine fleet with Komatsu models reflects the trust in the brand and strengthens Komatsu's market position with České sterkopísky.

Kuhn Bohemia – taking over representation for AMMANN ABG road pavers

Kuhn Bohemia and AMMANN are excited about their future partnership regarding the ABG road paver business in the Czech Republic.

“This partnership ensures that our customers in the region receive products and services of the highest quality. With the extensive experience and commitment of Kuhn Bohemia, we are confident that this cooperation will bring significant benefits to our customers and strengthen our presence in the Czech market,” states Massimo Mezzofanti (Global Marketing Communications Director Ammann Group)



Crawler paver ABG6820



ABG7320

New Komatsu fleet for the Armed Forces in the Czech Republic (ACR)

Komatsu has received a government contract to supply 4 crawler tractors for the needs of the armed forces. This was the first selection of these machines after many years to strengthen the operational capability of the Army of the Czech Republic. The delivery required special painting of the machines in matt NATO green, special equipment for the cabin and additional protection of some important machine parts, including the delivery of a Topcon 2D levelling device. The handover of the machines and training of the new users took place in the military complex of the Czech Armed Forces.

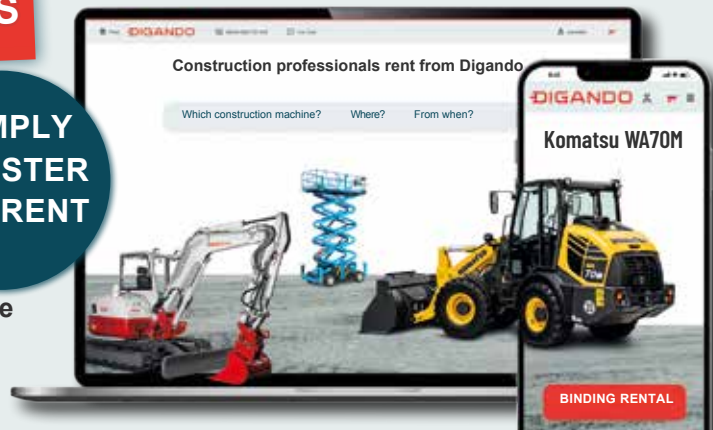


B2B ONLINE MARKETPLACE FOR CONSTRUCTION MACHINES

DIGANDO
READY TO RENT

- ✓ Binding online rental 24/7
- ✓ Availability in real time
- ✓ Construction machines & prices at a glance
- ✓ Rental agreement between leaser & lessee

**SIMPLY
REGISTER
AND RENT**



Over 18,000 construction machines in 160 rental stations

DIGANDO.COM

Long-term customer PCL a.s. has been one of our most important and loyal customers in Slovakia for several decades

With its successful history of 135 years, PCL a.s. has been one of our most important and loyal customers in Slovakia for several decades. PCL a.s. already successfully operates **10 Komatsu machines, including the HD405, HD605, WA600, D65, WA200 and WB97 models.** These machines have proven their performance and reliability over many years. In May 2024, the Butkov Quarry fleet was expanded with two new machines: the WA600-8EO and the HD405-8EO. These additions demonstrate PCL a.s.'s continued commitment to investing in advanced and efficient technologies to meet the increasing demands of the market. The WA600-8EO, a powerful wheel loader, is characterised by its high productivity and efficiency. It not only offers impressive loading capacity, but also state-of-the-art technology to



reduce fuel consumption and emissions. These features make it the ideal choice for heavy-duty applications in quarry operations, where reliability and performance are crucial.

The HD405-8EO dump truck perfectly complements the fleet with its robust construction and ability to transport large quantities of material efficiently.

GM and Komatsu are jointly developing a hydrogen-powered dump truck

GM is expanding its vision of a fully electric future to include heavy-duty machines, which the company is now developing together with Komatsu.

As fuel cells are very light and refuelling is quick, they are perfect for electrifying machines that were previously powered by a diesel engine.

Hydrogen cell technology makes it possible to store large amounts of energy efficiently on board the machine without losing payload.

In addition, machines that transport extreme quantities of material, such as the 930E with a nominal payload of 320 t, can operate emission-free.

These machines are typically used in a single mine for their entire service life, which simplifies the dimensioning and installation of a hydrogen refuelling infrastructure for the machine fleet.

The hydrogen operation of Komatsu dump trucks will provide an alternative to mobile battery chargers or fixed charging stations for decarbonisation, as no additional charging infrastructure needs to be installed in the mine. Komatsu has set itself the goal of reducing its global emissions by 50% by



The Komatsu 930E dump truck, which will be powered by Hydrotec fuel cells in the future.

2030 and achieving carbon neutrality by 2050. This includes reducing and eliminating

emissions from the company's products as well as from its factories and production.

Three HM400-5 articulated dump trucks ready for delivery to our customer VIGIER Beton

At the end of May 2024 the time had come – three HM400-5 articulated dump trucks were ready for delivery. Many thanks to our valued customer VIGIER Beton for the trust they have placed in us. With around 30 locations throughout Switzerland, the company is one of the market leaders in gravel extraction and concrete production. A particularly striking feature of these new dump trucks are the red handrails, which comply with operational safety standards. Another important detail is the 200 mm higher dumper body, which result in even more loading capacity. This adaptation shows how customers' needs are specifically considered and implemented in order to increase efficiency and productivity. VIGIER Beton's decision to use KOMATSU articulated dump trucks was largely influenced by the high level of driving comfort and the outstanding reliability of the vehicles, especially on rough terrain. This is of particular importance for the demanding locations, for example above Lake Thun, where conditions are often extremely challenging.



Three HM400-5 articulated dump trucks were ready for delivery at the end of May



Even rough terrain above Lake Thun is no problem for the HM400-5

Pliening WA475 biogas plant

Biogas plants must be operated competently, safely and efficiently. The Pliening biogas plant is supplied with the necessary raw materials every day so that methane gas production runs around the clock. The raw materials used are harvested by regional farmers on around 800 hectares and stored in the modern silo system.

A Komatsu WA475-10 from Kuhn has also recently been helping with biogas and electricity production. The machine is equipped with wide tyres, a calibrated scale,



quick coupler and high-tipping bucket. The wide tyres are helpful in generating as little ground pressure as possible and ensuring traction on the soft ground, as some of the silage has to be driven on. The calibrated scale is important in order to put exact amounts of material into the feed hoppers, as different recipes and compositions are required. In order to fill the material into the feed hoppers, the wheel loader is also equipped with a high-tipping bucket for greater lifting heights. And last but not least, the installed hydraulic quick coupler is needed to change the different attachments quickly and easily. The Komatsu wheel loader helps to generate 42 gigawatt hours of biogas and 4 gigawatt hours of electricity in the 2.7 megawatt plant in Pliening.

Purchase for the future

New member of the Komatsu fleet at the Schumann shell limestone plant

VELLBERG-ESCHENAU. Schumann has been a loyal Komatsu customer at Kuhn Baumaschinen Deutschland for over 20 years. Now was time to continue investing in the future and the businessmen decided to invest in a Komatsu HD605-8 dump truck. The dump truck is intended to ensure the transport of 550,000 tons of blasted shell limestone per year and is used in conjunction with a Komatsu WA500-8 and a PC800-8 in the shell limestone plant.

In addition to complying with all environmental regulations, the use of the latest engine technology is also important for Schumann. That is why energy-saving and low-emission vehicles and machines are used in order to be able to work in an environmentally friendly way. "Of course, in addition to environmental friendliness, durability and performance must also be right and we attach great importance to simple operating functions," sum up the

Schumann businessmen. In addition to the new Komatsu dump truck, Schumann uses five other Komatsu dump trucks, HD465-7, HD405-7, 2 x HD325-7 and HD325-6, two wheel loaders (WA470-6 and WA500-8), a D65EX-18 crawler and two crawler excavators (PC800-8, PC490-11). The Komatsu HD605-8

is responsible for transporting the blasted material within the shell limestone plant. "In conjunction with the WA500-8 and its outstanding dumping height, as well as the PC800-8, we had the opportunity to switch to the 60-ton class and thus reduce the transport share by 25%," sum up the businessmen.



The businessmen (from left): Jürgen Schumann and Andreas Schumann with the new addition to the team.

New Komatsu wheel loader WA 475 for SWM Schotterwerk Markgröningen

MARKGRÖNINGEN. In the Markgröningen gravel works near Ludwigsburg, shell limestone is mined, which is used as a base or aggregate in asphalt and concrete plants. SWM produces up to 450,000 tons of chippings and gravel for road and traffic route construction, which is extracted and processed on site. A new WA 475 wheel loader from Kuhn Baumaschinen is now joining the team to accelerate material reloading and therefore increase work efficiency.

The new model of the machine impressed with its performance, consumption and the new drive train with power-split transmission. The new purchase aimed to make the work even more efficient using the latest technology. "With its size and dimensions, the WA 475 fits perfectly into the existing fleet and the operational processes," explains Operations Engineer Alexander Burckhardt. The 25-ton wheel loader is equipped with an EU Stage V engine and Komatsu's power-split transmission (KHMT). KHMT is an innovative technology from Komatsu that makes the WA 475 even more powerful and fuel-efficient. Thanks to the variable gear ratio of the transmission, the engine always works in the high-efficiency range, which reduces fuel consumption.



(From left): Rene Schuch, Operations Manager, Alexander Burckhardt, Operations Engineer and Kuhn Sales Manager Jochen Beißwenger, at the handover of the new Komatsu wheel loader WA 475.

POWERSCREEN

MARKET LEADING CRUSHING AND SCREENING TECHNOLOGY

Screening and crushing plants

POWERSCREEN®
A TEREX BRAND

Screening and crushing plants

Compact and intelligent Froschauer relies on 3D-MG in the new Komatsu short-tail excavator PC138US

WEYARN. The family business Froschauer GmbH, founded in 1946, is active in demolition, recycling, forest road construction and earthworks and civil engineering. Georg Froschauer and his ten employees work on three to four construction sites in parallel in the greater Munich area, Bad Tölz, Miesbach and Rosenheim and, in addition to earthworks and civil engineering work, also offer demolition, sewer work and the recycling of construction materials. For this, he naturally needs reliable construction machines with which he can work effectively. Before buying it, businessman Georg Froschauer tested the machine on the construction site as well as the Komatsu Smart Construction 3D Machine Guidance System on the Kuhn Baumaschinen demo site in Hohenlinden.

It quickly became clear that the PC138US-11 was the perfect machine for the company. It was important to Froschauer that the machine could be used universally and that it could be used for excavation work on smaller construction sites, as well as for canal work, smaller demolition work and fine grading.

Together with the Smart Construction 3D Machine Guidance System and the 3D display system retrofit kit for mixed fleets, which enables even more precise digging operations with any new or existing hydraulic



Together with Smart Construction 3D Machine Guidance, the Komatsu PC138US-11 is perfect for Froschauer GmbH's area of application.

or mobile excavator, the right machine was found for Froschauer. The integrated payload scale supports the machine operator during profiling work and ensures maximum

efficiency while preventing trucks from being overloaded. The PC138US-11 with 3D-MG will remain in operation at Froschauer for up to 1,200 hours a year in the future.

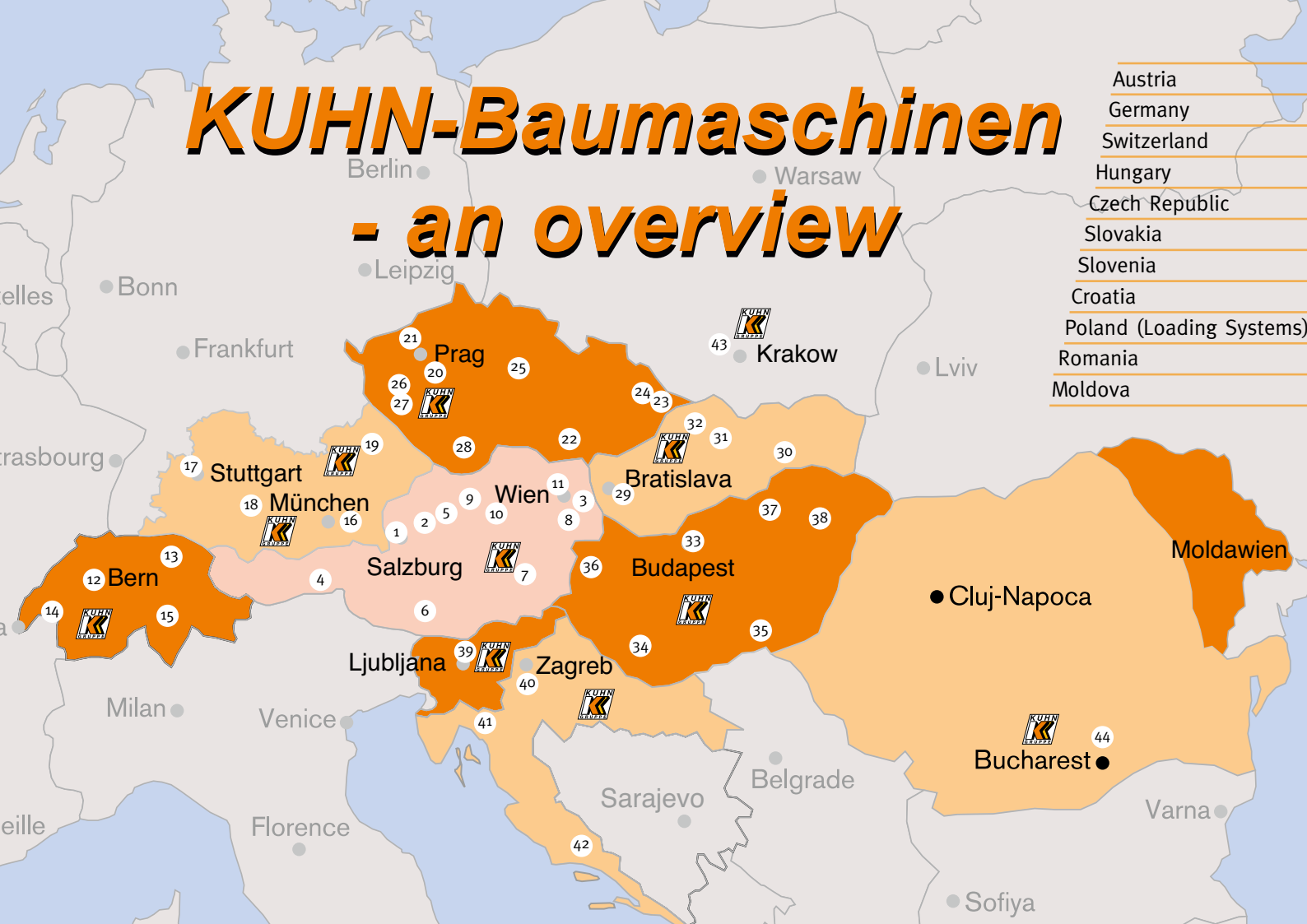
KUHN's successful participation at the apprenticeship fair in Vöcklabruck

With around 2,000 visitors, the apprenticeship and education fair, which took place from 23 to 25 May 2024 in the REVA Hall in Vöcklabruck, set a new record. We were among the 76 exhibitors – more than ever before.

Almost without exception, all middle schools in the Vöcklabruck district attended this event. Around 800 parents and children took the opportunity to find out more together. Many of those who visited the fair with their school on Thursday or Friday came with their parents on Saturday to find out more. Our exhibition stand was bustling with activity and we were able to have numerous interesting conversations with parents and young people about the apprenticeship as a metalworking technician/vehicle construction technician, as well as the opportunities available in our company.



KUHN-Baumaschinen - an overview



- Austria
- Germany
- Switzerland
- Hungary
- Czech Republic
- Slovakia
- Slovenia
- Croatia
- Poland (Loading Systems)
- Romania
- Moldova

Kuhn branches near you

KUHN-Baumaschinen GmbH Austria

- 1 HQ Eugendorf near Salzburg
Tel. (+43) 6225-8206-0
- 2 Mondsee branch
Tel. (+43) 6232-6862
- 3 Himberg branch near Vienna
Tel. (+43) 2235-87580
- 4 Stans branch
Tel. (+43) 5242-64600-620
- 5 Vöcklabruck branch
Tel. (+43) 7672-725320
- 6 Villach branch
Tel. (+43) 4252-2848
- 7 Pernegg branch
Tel. (+43) 3867-8881
- 8 Achau branch
Tel. (+43) 2236-714880
- 9 Traun branch
Tel. (+43) 7229-2 06 04
- 10 St. Georgen
am Ybbsfelde branch
Tel. (+43) 7472 61263-0
- 11 Bisamberg branch
Tel. (+43) 2262 714 00

KUHN-Schweiz AG

- 12 HQ Heimberg near Bern
Tel. (+41)334398822

- 13 Lommis branch
Tel. (+41)523696030
- 14 Granges branch
Tel. (+41)219462846
- 15 Tessin branch
Tel. (+41)791371823

KUHN-Baumaschinen Deutschland GmbH

- 16 HQ Hohenlinden
near Munich
Tel. (+49) 8124 4463-0
- 17 Stuttgart branch
Tel. (+49) 7150-2097-0
- 18 Elchingen branch
near Ulm
Tel. (+49) 7308-9 23 23 03
- 19 Würth a. d. Donau
branch
Tel. (+49) 94 82 - 80 21 81

KUHN-Bohemia a.s.

- 20 HQ Prague/Čestlice
Tel. (+420) 212200200
- 21 Most branch
Tel. (+420) 417638701
- 22 Brno branch
Tel. (+420) 547210141
- 23 Ostrava branch
Tel. (+420) 596238012

- 24 Opava branch
Tel. (+420) 601368588
- 25 Pardubice branch
Tel. (+420) 466971531
- 26 Plzeň Hrbítovní branch
Tel. (+420) 377462045
- 27 Plzeň Borská branch
Tel. (+420) 724723051
- 28 České Budejovice branch
Tel. (+420) 380900491

KUHN-Slovakia s.r.o.

- 29 HQ Senec/Bratislava
Tel. (+421) 263 83 85 09
- 30 Prešov/Haniska branch
Tel. (+421) 513 240035
- 31 Banská Bystrica branch
Tel. (+421) 484147012
- 32 Žilina branch
Tel. (+421) 417003766

KUHN-Kft.

- 33 HQ Budapest
Tel. (+36) 12898080
- 34 Kaposvar branch near Pecs
Tel. (+36) 309415710
- 35 Szeged branch
Tel. (+36) 304456248
- 36 Szombathely branch
Tel. (+36) 304456246

- 37 Miskolc branch
Tel. (+36) 304456251
- 38 Nyiregyháza branch
Tel. (+36) 304456241

KUHN d.o.o.

- 39 Trzin near Ljubljana
Tel. (+386) 1-5622271

KUHN - Hrvatska

- 40 HQ Zagreb
Tel. (+38) 512407522
- 41 Rijeka branch
Tel. (+38) 512407522
- 42 Split branch
Tel. (+38) 512407522

KUHN - POLAND (LOADING SYSTEMS)

- 43 Kuhn Polska Sp. z.o.o.
(Loading Systems)
HQ Sosnowiec
Tel. (+48) 322-586030

KUHN - ROMANIA/MOLDOVA

- 44 Marcom RMC' 94 SRL
Romania
HQ Bucharest
Tel. (+40) 2135-2 21 64

www.kuhn.at



KOMATSU